

Information about safety precautions at Enefit Green AS Iru power plant

Location of the installation and brief description of its activities

The activity of Enefit Green AS Iru Power Plant (hereinafter referred to as Iru Power Plant) is the production of heat and electricity using mixed municipal waste and natural gas.

The Iru power plant is located in Maardu, at Peterburi tee 105.

The company has manned security 24 hours.

Contact details of the responsible person providing information on safety precautions

Further information on safety precautions can be obtained from: Operator on duty +372 5090 692

Website for more information: www.enefitgreen.ee

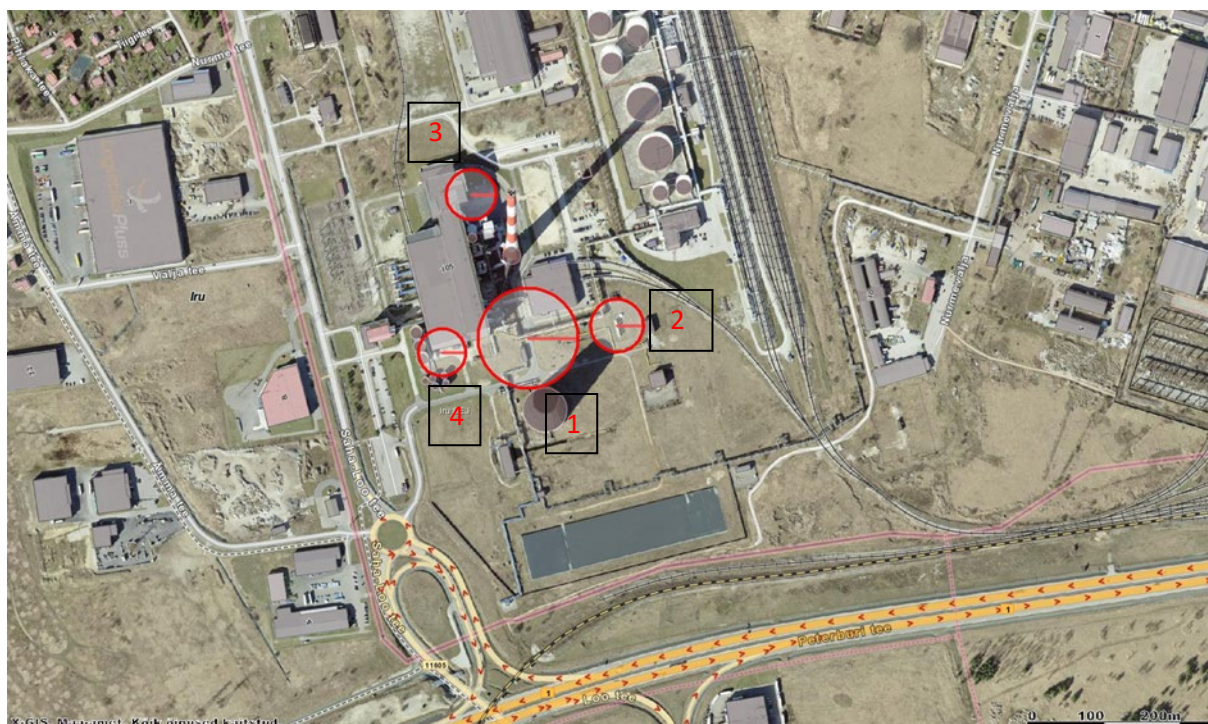
Description of the hazard category of the installation and the chemicals used

Iru Power Plant is a category B company with a major accident risk. The company has all the permits necessary for its activities, including a permit issued under the Industrial Emissions Act. The competent authorities have been provided with the documents required under the Chemicals Act.








Information on the date of the last state supervision activity carried out on the spot can be found on the website of the Rescue Board (<https://www.rescue.ee/et/ohtlikud-ettevotted>) and detailed information on the last supervision activity, inspection plan and additional information can be obtained from the competent authorities: the Rescue Board (rescue@rescue.ee, general phone: 628 2000) and the Consumer Protection and Technical Regulatory Authority (info@ttja.ee, general phone: 667 2000).

The obligations arising from the regulations are duly fulfilled, we have prepared a risk analysis to identify hazards, and the company has an emergency plan to minimize risks. The company has primary fire extinguishing equipment, external and internal fire water network, automatic fire alarm systems and extinguishing systems, and an absorber for responding to accidents.

According to the risk analysis carried out, the neighbouring property is affected by a fire caused by the bursting of the natural gas pipeline when natural gas ignites, the radius of the danger area of medium-term thermal radiation is shown in a separate figure. In the event of a fire, the shut-off valve of the gas pipeline will be closed and the Emergency Response Centre will be notified. In addition, accidents related to other chemicals can also occur in the company (e.g. leaks caused by broken tanks and pipelines). Depending on the properties of the chemical that may leak, in the event of an accident, the company's property, including buildings and equipment, and mainly to the company's employees or pedestrians in the vicinity, are at risk. The extent of the impact of an accident on a neighbouring company is unlikely.



List of hazardous chemicals and hazard area sizes according to the numbering in the figure:

Jrk	Hazardous chemical	Description of characteristics	Hazard pictogram	Danger area (m)
1.	Natural gas	H220 Highly flammable gas		R(buildings) = 65 m Ro = 45 m Rv = 14 m Re = 10 m
2.	Hydrogen	H220 Highly flammable gas, H280 Contains gas under pressure, may explode when heated	 	R(buildings) = 16 m Ro = 34 m Rv = 30 m Re = 20 m
3.	Ammonia water, 25% NH ₄ OH	H314 Causes severe skin corrosion and eye damage, H400 Very toxic to aquatic life	 	Ro = 32 m Rv = 13 m
4.	Hydrochloric acid, 32-37 % HCl	H314 Causes severe skin corrosion and eye damage, H335 May cause respiratory irritation	 	Ro = 32 m Rv = 14 m

Conduct in the event of a major accident

In the event of an emergency, the engineer on duty of the Iru power plant will determine the seriousness of the emergency and act accordingly:

- eliminates the accident and its consequences with its own forces, notifying of the accident in accordance with the current instructions (including GoCraft AS in case the emergency may affect neighbouring properties);
- if the resources of the station are not sufficient, the Rescue Board will be called in addition to the above.

Unauthorised persons who are not involved in the elimination of the accident will evacuate by gathering in the parking lot at the main entrance of the company.

Some recommendations for people in the vicinity of the company. If you hear the sirens of rescue vehicles, see smoke or fire, notice rescue vehicles, become aware of an emergency by phone or otherwise, do the following:

- When outdoors, move perpendicular to the direction of the wind away from the danger area, if possible, shelter in a room with closed doors and windows to protect yourself from smoke;
- While in the car, close the windows and doors, turn off the ventilation and move out of the danger zone;
- Do not use an open fire, do not smoke;
- Use the phone only when seriously necessary, so as not to overload the phone lines.

In the event of an accident, all instructions given by the Rescue Board must be followed.

Cooperation with the Rescue Board

In order to ensure the necessary action in the event of a major accident and to reduce the consequences, Iru Power Plant cooperates with the Rescue Board. Iru Power Plant has an Emergency Resolution Plan approved by the Rescue Board, which contains instructions for the company's employees on how to cope with the consequences of accidents and how to provide the necessary information.

Once a year, general exercises are held at the Iru Power Plant to ensure that the personnel are aware of what to do in an emergency.

Information compiled: 01.04.2025